

2 inch HIGH POWER DOME SQUAWKER LOUDSPEAKER

APPLICATION

For use in hi-fi enclosures. This loudspeaker has a very wide radiating pattern due to its nearly flat conical front.

TECHNICAL DATA

	version	
	Sq4	Sq8
Rated impedance	4	8 Ω
Voice coil resistance	3,4	6,9 Ω
Resonance frequency	340	360 Hz
Rated frequency range	550 to 5000 Hz	
Power handling capacity, * loudspeaker mounted on IEC baffle measured with filter		
36 μ F - 1,2 mH	30	W
18 μ F - 2,4 mH		30 W
Maximum power on loudspeaker	60	W
Operating power	2,5	W
Sweep voltage (100 to 10 000 Hz, filter	3,1	V
36 μ F - 1,2 mH		4,4 V
18 μ F - 2,4 mH)		
Energy in air gap	288	mJ
Flux density	1,1	T
Air-gap height	3	mm
Voice coil height	3,3	mm
Core diameter	50	mm
Magnet material	ceramic	
diameter	110	mm
mass	0,65	kg
Mass of loudspeaker	1,5	kg

The loudspeaker has a textile dome and an acoustically sealed pot. No isolation is required. Connection to the squawker by means of 2,8 mm (0,11 inch) tag connectors or by soldering.

AVAILABLE VERSIONS

AD02150/Sq4, catalogue number 2422 257 32321 } these numbers apply to bulk packed loudspeakers,
AD02150/Sq8, catalogue number 2422 257 32322 } minimum packing quantity 8 per unit.

FREQUENCY RESPONSE CURVES (see Fig. 2)

Measured in anechoic room, loudspeaker mounted on IEC baffle at operating power. Above 500 Hz the sound pressure may not deviate more than ± 1 dB.

Curve a: Sound pressure.

Curves d2 and d3: 2nd and 3rd harmonic distortion.

* Measured according to DIN 45573 par. 3.2.

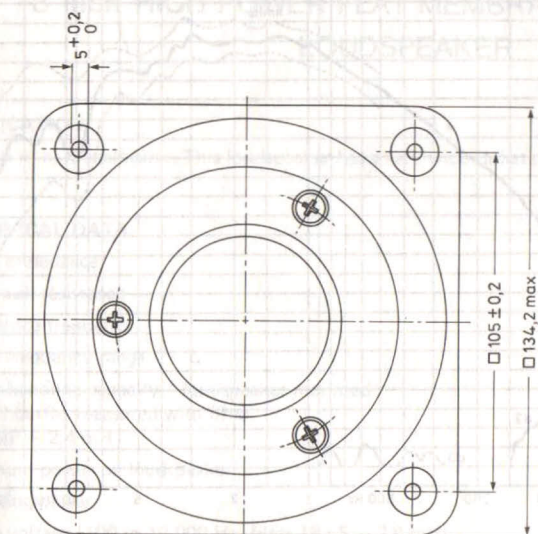
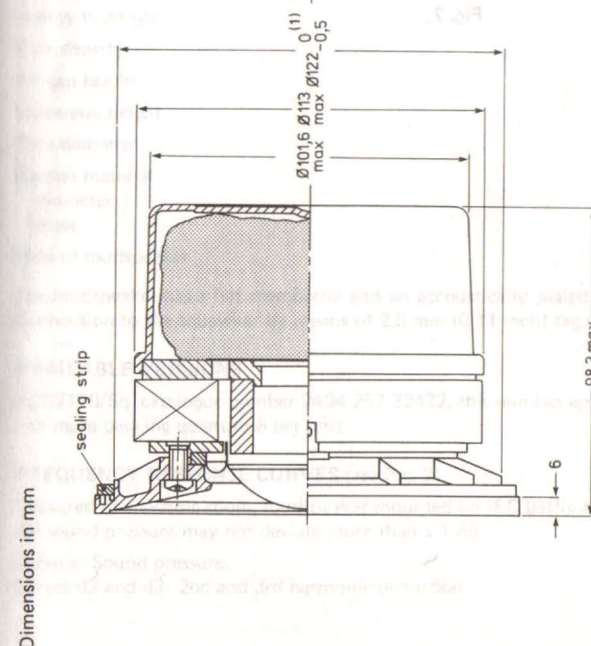


Fig. 1.



(1) Baffle hole diameter 122 mm.
One tag is indicated by a red mark for in-phase connection.

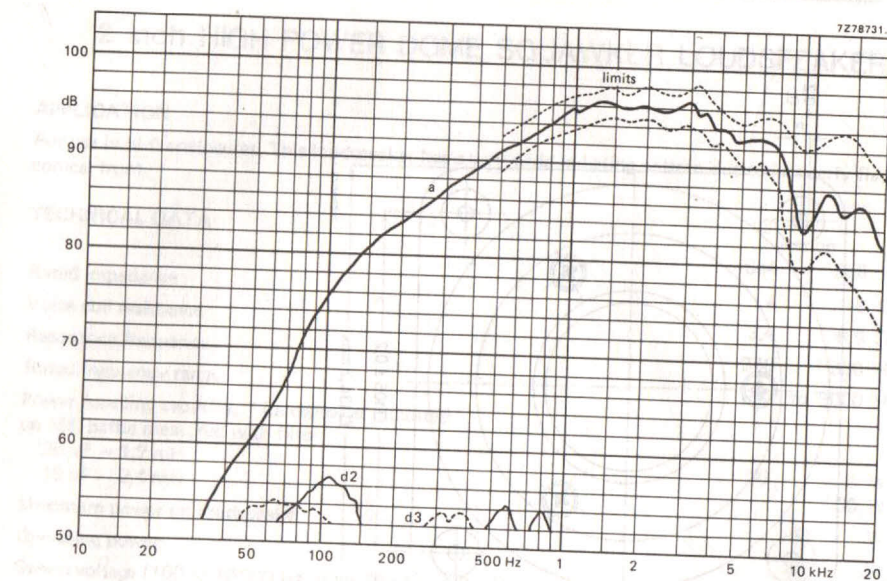
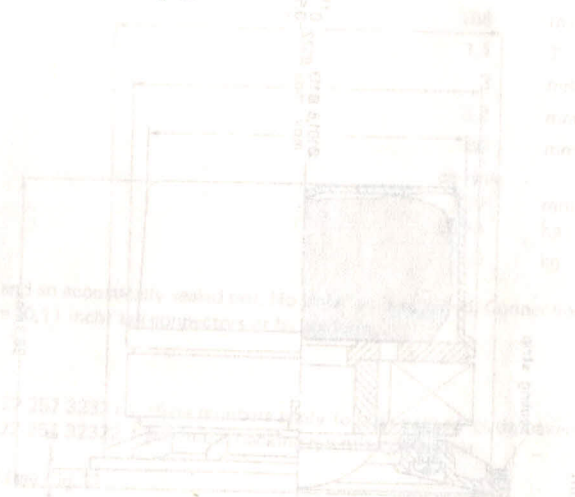


Fig. 2.



Discontinued